

# Integrated Community Teams (ICTs)

**Josh Broadway**  
Programme Manager

*Improving Lives Together*



# Strategic Context

## Sussex Integrated Care System (ICS)

ICSs are a way of working in partnership across health and care for a broad population. They are made up of two statutory components:


- **Integrated Care Boards (ICBs):** statutory bodies that are responsible for planning and funding most NHS services in the area.

In Sussex this is known as the **NHS Sussex ICB**.

- **Integrated Care Partnerships (ICPs):** joint statutory committees that bring together a broad set of system partners including local government, NHS organisations, VCSE & others to develop a health and care strategy for the area.

In Sussex this is known as the **Sussex Health and Care Assembly**.

- In Sussex the three statutory **Health and Wellbeing Boards** oversee a Place **Health and Care Partnership** that draws together NHS, local government and wider partners, and focusses on the populations covered by the **Joint Strategic Needs Assessment (JSNA)**.



**We see ICTs as the building block for how we embed our plans and continue to transform our local health and care system, shaping and delivering services differently both with, and in, our communities in the future.**

# Strategic Context

## The Case for Change

The **Fuller Stocktake** proposed the development of **integrated neighbourhood teams**, and their implementation is underway across the country.

These teams are intended to help by focusing on:

- streamlining access to care and advice to **meet the needs of infrequent users** of health and care services
- providing more **proactive, personalised and multi-disciplinary care for people with more complex needs**
- helping people to stay well for longer, through a **joined-up approach to prevention**.



**ICT footprints agreed  
across Sussex**



**ICT data packs  
developed for each  
footprint**

# Strategic Context

## ICT footprints

We have agreed **16 ICT footprints across Sussex**. These will serve as the core geographies for planning and delivering services in partnership focussed on local communities and neighbourhoods.

**In East Sussex we have 5 ICT footprints aligned with district or borough councils.**



*Improving Lives Together*

# ICT Data Packs

**Sussex ICT model will be driven by data and reflective of population needs**

**We've been working on a data pack to support ICT delivery.**

Different data sources complimented by local knowledge and community Insight will be key in highlighting specific needs and challenges faced by each ICTs population.

These opening ICT data packs are intended to set the scene for the ICTs. Whilst they alone will not provide the final answer, they are designed to help stimulate the questions which will.

After initial release in December, the packs will develop further in response to feedback to help support the ICTs in their development.



*Improving Lives Together*

# What functions will an ICT deliver?

The core offer will support and enable ICTs to deliver a range of functions including:

- Strength based approach with communities
- Supported self-management
- Holistic person-centred assessment
- Care navigation and social prescribing
- Care Coordination
- Case Management
- Proactive multi-disciplinary interventions
- Planned and routine care and urgent care





**We're building  
on strong  
foundations**

# What do we mean by being integrated?

## Building on strong foundations


A lot of work has already taken place over recent years to improve the support, care, and treatment available, and the timeliness of how people access services. **This has made a real difference.**

In East Sussex we have some solid foundations including:

- Health and Social Care Connect (HSCC)
- Joint Community Rehabilitation (JCR)
- OTs based within district and borough council housing teams
- Social care and rehabilitation teams helping people with mental health issues sustain placements
- Integrated Single Point of Advice (SPOA) front door joining early help, social care and mental health
- Integrated 0-5 service including health visitors, family keyworkers, communication support workers
- Making it Happen – asset-based community development

However, we know that **integration takes time** and that **developing successful relationships** is key.

*Improving Lives Together*



**We also know that there are things that can get in the way of working together; the difficulties in data sharing for example or the lack of clear processes for decision making.**

# Where could we start?

## Exploring where ICTs could have the greatest impact both now and in the longer term

We want ICTs to make a difference for the people who use our services.

There will be things we can do together in the short term such as improved communication and collaboration through Multi-disciplinary Teams (MDTs), and further strengthening relationships between teams supporting people.

There will also be things we will want to do over the longer term, which may require additional resource or commitment from leaders to work differently.



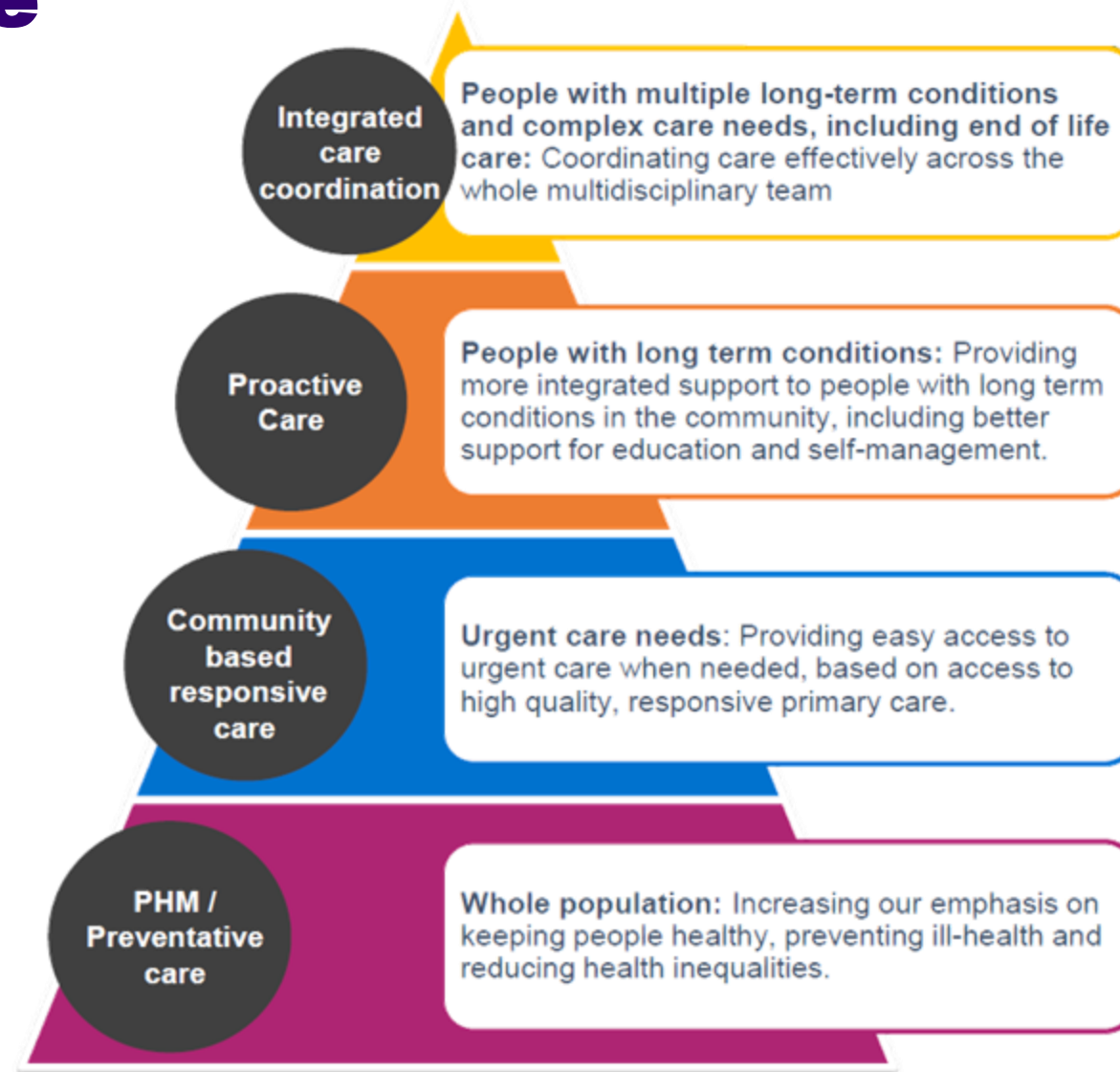
**The initial focus should be on delivering proactive care to the most complex and vulnerable patients with the aim of reducing avoidable exacerbations of ill-health and improving the quality of care for older people.**

**This includes continuing to deliver proactive support for people living in care homes, in line with the latest enhanced health in care homes guidance.**

*NHS Planning Guidance, 2024/2025*

*Improving Lives Together*

# Model of care



*Improving Lives Together*

# ICT Development Sessions

## Bringing partners together in our ICT footprints

**In spring we held our first ICT development sessions in Hastings, Rother, Lewes, Wealden and Eastbourne with people working in our communities across health and care.**

Together we looked at:

- What do we mean by integration
- Outcomes we would like to see for our local populations through ICTs
- A self-assessment against the key characteristics needed for integrated neighbourhood delivery
- Headline messages from the population data pack

Attendees signalled their commitment to come back together again in the summer to shape further development of the operating model and the potential areas of focus for their ICT.

*Improving Lives Together*



# **Have you got questions?**

**Get in touch:**

**Josh Broadway, Programme Manager**  
**[josh.broadway@eastsussex.gov.uk](mailto:josh.broadway@eastsussex.gov.uk)**





**What does  
integration mean  
to you?**

# Integrated Community Teams (ICTs)

**May 2024**

*Improving Lives Together*

